



Survey and Drafting

RPM's Survey and Drafting services means knowing what you have and where you have it

In the world of retail, no two stores are alike. With acquisitions, mergers, and new store construction going at a rampant pace, you need to know what you have. By using RPM's Survey and AutoCAD services, you will know what you have and where you have it "On Demand"



RPM Trained Surveyors

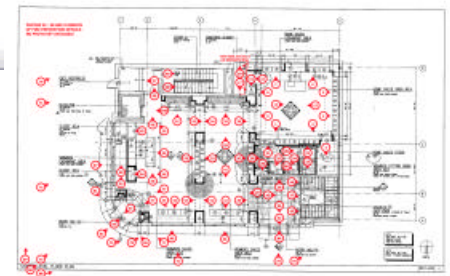
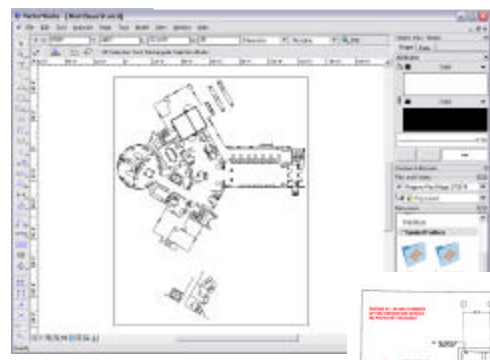
?? RPM's survey teams are trained and certified on every survey they are completing. Since we handle any level of survey, training is a necessity

Survey Technology

- ?? RPM surveyors use Tablet PC's in the field to gather the most accurate information digitally and upload directly to a webform on the rpm-direct website
- ?? You can view your survey and information in an on demand database.

Turn Handwritten Drawings into AutoCAD Drawings

- ?? When the drawing and information are sent directly to the field, our office Drafting technicians can pick it up and immediately start on the drawing.
- ?? RPM Drafting Technicians are well versed in AutoCAD and Vectorworks.



Notations and Comments

- ?? RPM drafting technicians can use the information provided by the surveys to make notations and comments on the store site if there are any damages or suggest areas where a display or fixtures could go.

Using RPM's real time website you can access any of this information at any time.

For more information, call 1-800-218-7552 x 203, visit www.rpm-direct.com, or email sales@rpm-direct.com